



Software **E**ngineering
& **P**roject **M**anagement

SEPM Products Release 2017-02

New Features

Dokument Information

Key	Value
Abstract	This document describes new features in the SEPM product release 2017-02
Version	2017-02

Disclaimers

All logos and trademarks in this document are property of their respective owners.

Contact

Software Engineering and Project Management

Gerliswilstrasse 42
CH-6020 Emmenbrücke
Switzerland

Tel +41 79 632 28 20

Fax +41 41 260 57 20

www.sepm.ch

support@sepm.ch

Contents

1	Overview	4
1.1	Changes Overview	4
1.2	Installation/Upgrade	5
1.2.1	System- Requirements	5
1.2.2	Upgrade of Software Modules	5
1.2.3	RealDWG™-based AutoCAD DWG/DXF Format	5
1.2.4	SEPM X-Translator Database	5
1.2.5	PNI	6
2	SEPM X-Translator	7
2.1	Smallworld Format	7
2.1.1	Default Attribute Values	7
2.1.2	Version management for the Translator database	7
2.2	RealDWG™ "AutoCAD DWG/DXF" Format	8
2.2.1	Source Format	8
2.2.2	Target Format	8

1 Overview

1.1 Changes Overview

This Release **2017-02** covers the following improvements:

- ❖ Improvements of the **SEPM X-Translator** RealDWG™-based AutoCAD DWG/DXF format
- ❖ Database upgrade **SEPM X-Translator Database**
- ❖ Provision for configurations where ACE scale factors have been set to 1.0

1.2 Installation/Upgrade

1.2.1 System- Requirements

SEPM Products 2017-02 are supported on Smallworld 400 to 430, as well as Smallworld 5 (Development and testing was done on Smallworld 511).

SEPM NEPAN DLLs require NEPLAN 5.5.4 or higher.

The RealDWG™-based AutoCAD DWG/DXF format requires .net 4.6.

The SEPM ISYBAU Interface Requires NRM Wastewater for Smallworld 4.3

1.2.2 Upgrade of Software Modules

The upgrade can be done as usual with following steps

- ❖ Replace product *x_translator*
- ❖ Copy SEPM customer modules
- ❖ Copy license files from the old to the new version (unless you have configured the path to the license files *x_base_settings.licenses_dir*)

1.2.3 RealDWG™-based AutoCAD DWG/DXF Format

This release requires a new version of the helper program *DwgAcp.exe*:

- ❖ Uninstall any existing *DwgAcpSetup.msi*. Please make sure that the installed files have been completely removed from the system
- ❖ Install the new *DwgAcpSetup.msi* from this release 2017-02. The installation directory should not contain any spaces (for example *C:\DwgAcp40*)
- ❖ Make sure that the *SW_ACP_PATH* includes the directory used in the setup.

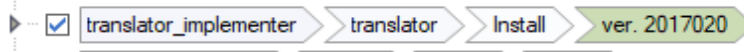
1.2.4 SEPM X-Translator Database

This release contains an upgrade to the SEPM X-Translator database:

- ❖ The objects *X-Translator Coverage*, *-Polyline*, *-Point* and *-Label* have a *Lineweight* attribute (which is read from the DXF in the RealDWG™-based AutoCAD format)
- ❖ Additional label styles have been added to accomodate small DXF texts
- ❖ Some label styles have been corrected

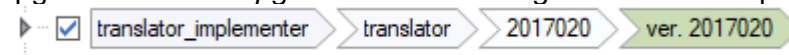
To install/upgrade the SEPM X-Translator Database, follow these steps:

- ❖ Load the module *translator_implementer*
- ❖ New installation: Run the *Install/2017020* configuration of the implementer:



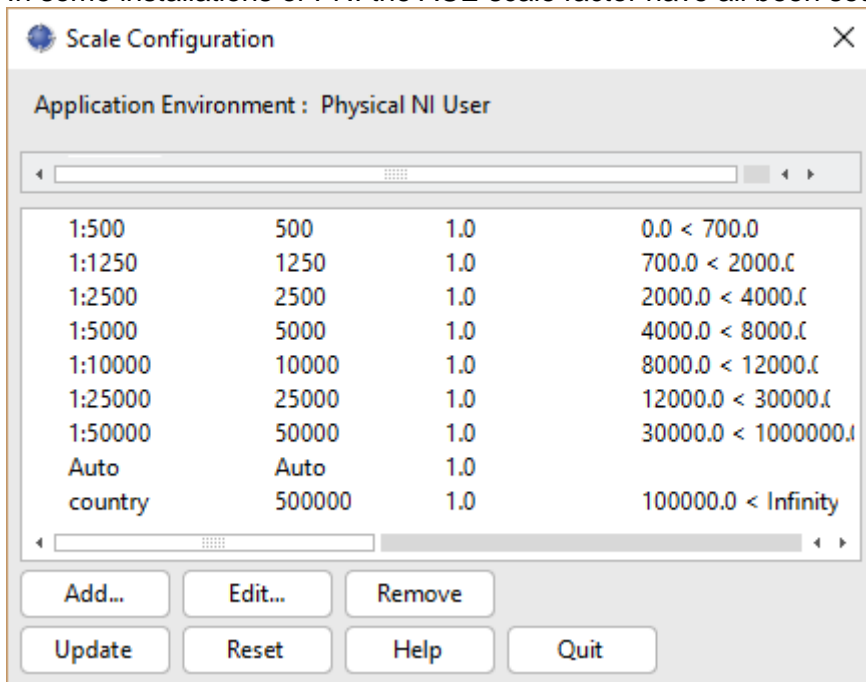
- ❖ New installation in Smallworld 511: An empty version of the database is provided in *x_translator\ds\511* (in case the installation with the implementer fails)

- ❖ Upgrade: Run the *Upgrade/2017020 configuration* of the implementer:



1.2.5 PNI

In some installations of PNI the ACE scale factor have all been set to 1:



Situation with ACE scale factors set to 1 for all display scales

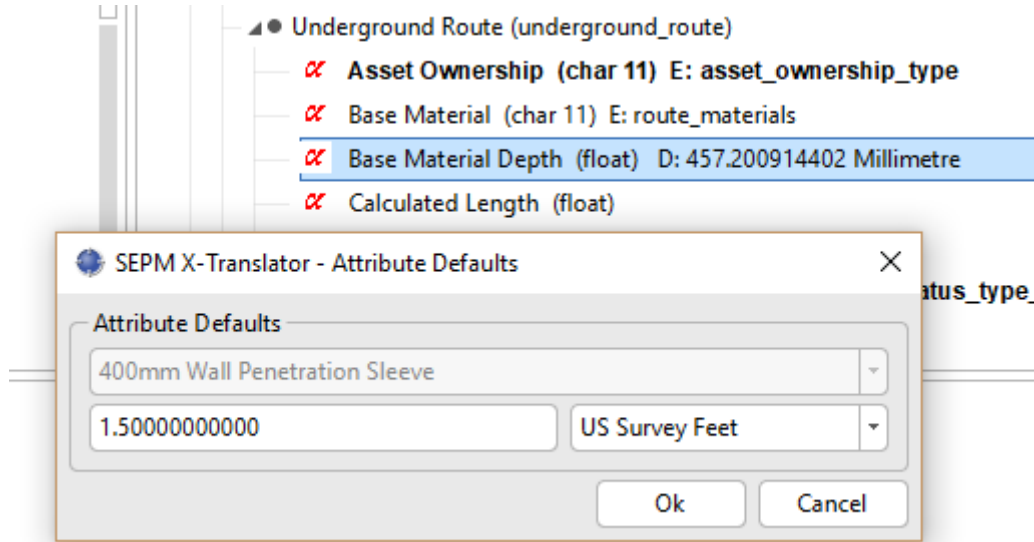
To correctly calculate the conversion of DXF dash patterns and line widths the following configurations should be done:

- ❖ Configuration of *x_translator_settings.display_style_scale_mapping* (An example for the PNI demo database is provided in the module *x_translator_customer_pni_sw5*).
- ❖ If the SEPM X-Translator database is used, the style dump *pni_2017_02.style* in directory *translator_implementer/resources/Base/datamodel* should be loaded manually after the normal installation has been done.

2 SEPM X-Translator

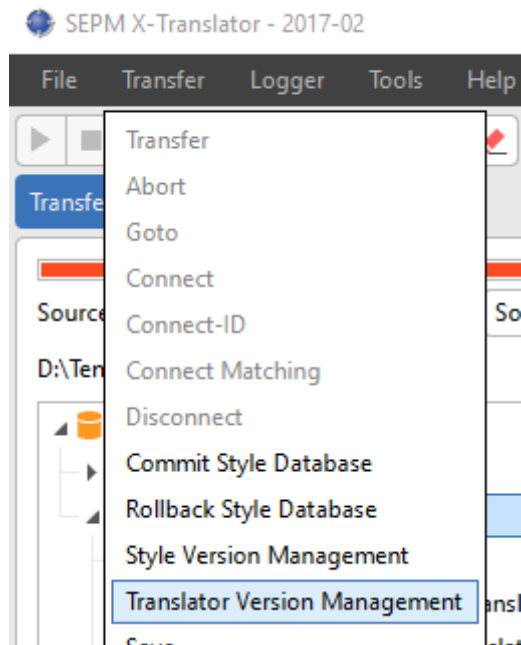
2.1 Smallworld Format

2.1.1 Default Attribute Values



You can now select the unit for Attribute Default Values. The unit is initialised as configured in the Object Properties for the attribute in the current ACE.

2.1.2 Version management for the Translator database



A command is added to launch the Version Management Dialog for the Translator database.

2.2 RealDWG™ "AutoCAD DWG/DXF" Format

2.2.1 Source Format

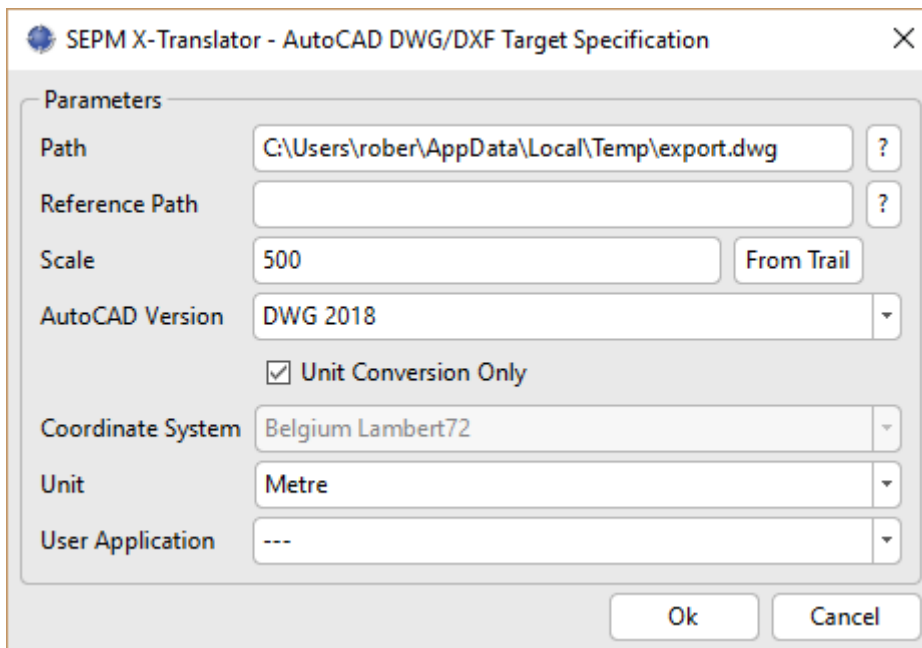
A number of improvements have been implemented:

- ❖ *DWG 2018* is now supported
- ❖ The following entities are now loaded (exploded into polyline and text objects): *LEADER/MLEADER* and *DIMENSION*
- ❖ *DXF XDATA* is now read into the *Remark* field
- ❖ Frozen layers are now skipped in all cases (depending on the selected option)
- ❖ Blocks inserted at the origin are now exploded

2.2.2 Target Format

A number of improvements have been implemented:

- ❖ *DWG 2018* is now supported
- ❖ A *Reference File* can be provided with styles, symbols, viewports and similar information which is copied from this file to the target file



AutoCAD Target Dialog with Reference Path property. Default format is now DWG 2018.