



**Software Engineering
& Project Management**

SEPM Services

Software Engineering

Whatever your requirement, SEPM implements an easy to use and efficient solution. We use a practical method consisting of requirements analysis, specification, design, implementation and testing.

We are not simply satisfied with a data model, design or user interface "that works", but a SEPM software should be as minimal as possible, fast, easy to use and maintain.

Interfaces

- ❖ Development of new interfaces
- ❖ Redesign of legacy-interfaces
- ❖ Interfaces to systems for network calculation, analysis, statistics, visualization, maintenance, etc.

Migrations

- ❖ Data migration from system A to system B
- ❖ Data model conversion
- ❖ Change of the geographic reference frame

Data Modeling

- ❖ Design of simple and scalable data models
- ❖ Generation of physical databases by script

GIS-Tools

- ❖ Development of GIS functionality
- ❖ Automation of data capture
- ❖ Mathematical and physical models

INTERLIS/GML

- ❖ Design of INTERLIS/GML models
- ❖ Design of INTERLIS/GML interfaces

Consulting

Service for SEPM products

- ❖ Advice on application and deployment
- ❖ Maintenance and support
- ❖ Training and workshops
- ❖ Integration into existing systems

Software Engineering & Project Management

Gerliswilstrasse 42 CH-6020 Emmenbrücke Switzerland

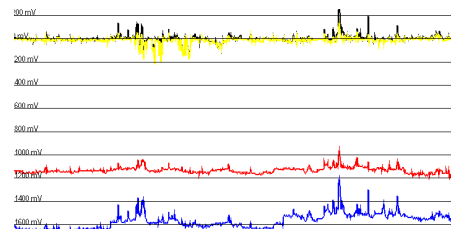
Tel. +41 79 632 28 20

Fax +41 41 260 57 20

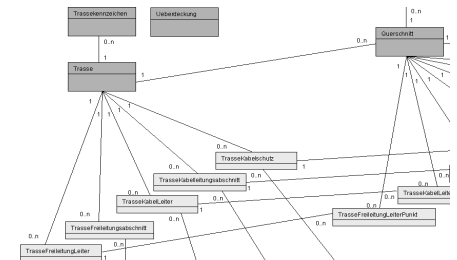
www.sepm.ch

info@sepm.ch

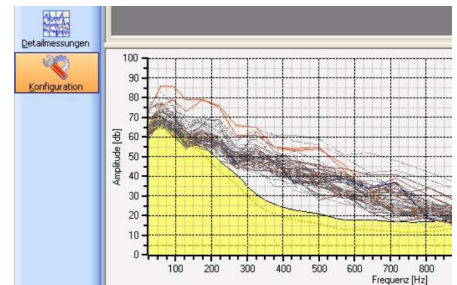
Reference Projects



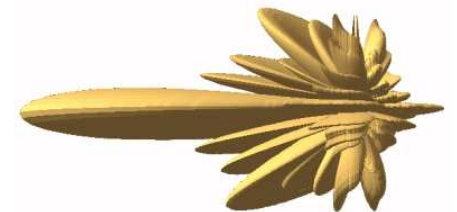
Analysis of potential measurements



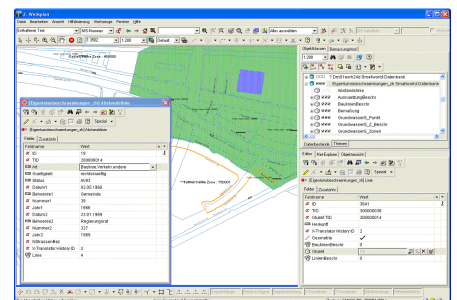
Design GIS data model electricity



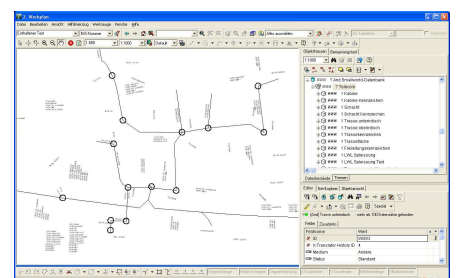
Parameterization of leakage detection systems



Calculation of radiation of a mobile antenna



Database generation from a INTERLIS model



Database for a telecom information system